

Instituto Tecnológico de Salina Cruz

Fundamentos de Redes

Semestre Enero – Julio 2015

Reporte de Práctica

Práctica nº 2

Unidad 2

Nombre: GARCIA IBAÑEZ MARCOS ANTONIO

Fecha: 16 de Abril del 2015

Objetivo:

Conocer los comandos básicos de un router Cisco, levantamiento de puertos fast-ethernet, seriales.

Instrucciones:

Realice las rutas estáticas para los siguientes escenarios, construya los cuatro pasos vistos en las prácticas anteriores.

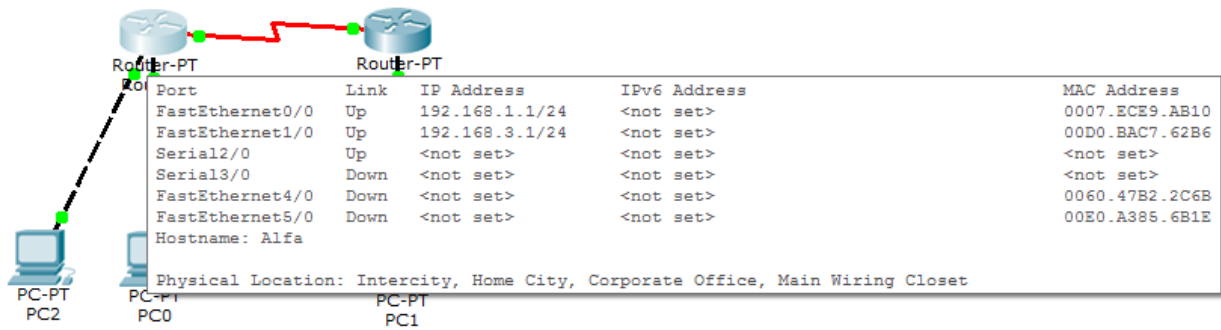
Configuración Inicial.

Cambio de direcciones a las PC'S.

Materiales:

Programa de simulacion Packet Tracer

Correspondiente al router Alfa.



Levantamiento de Fast-Ethernet en Alfa

```
Alfa>enable
Password:
Password:
Alfa#configure terminal
Enter configuration commands, one per line. End with CNTL/Z.
Alfa(config)#interface fa1/0
Alfa(config-if)#ip address 192.168.3.1 255.255.255.0
Alfa(config-if)#no shutdown

Alfa(config-if)#
%LINK-5-CHANGED: Interface FastEthernet1/0, changed state to up

%LINEPROTO-5-UPDOWN: Line protocol on Interface FastEthernet1/0, changed state to up
```

Copy Paste

```
>enable
word:
#config t
r configuration commands, one per line. End with CNTL/Z.
(config)#interface fa1/0
(config-if)#ip address 192.168.3.1 255.255.255.0
(config-if)#no shutdown

(config-if)#
K-5-CHANGED: Interface FastEthernet1/0, changed state to up

EPROTO-5-UPDOWN: Line protocol on Interface FastEthernet1/0, changed state to up
```

Copy Paste

Levantamiento de seriales en Alfa

```
Alfa>enable
Password:
Alfa#config t
Enter configuration commands, one per line. End with CNTL/Z.
Alfa(config)#ip route 192.168.2.0 255.255.255.0 serial3/0
Alfa(config)#interface serial3/0
Alfa(config-if)#no shutdown

%LINK-5-CHANGED: Interface Serial3/0, changed state to down
Alfa(config-if)#
```

Copy

Paste

The screenshot shows the Cisco Packet Tracer interface. In the center, a network diagram displays two routers (R1 and R2) connected via Ethernet. Router R1 is connected to PC0 and PC1 via Ethernet ports. The Serial3/0 interface on R1 is highlighted, and a table shows its status and configuration details.

Port	Link	IP Address	IPv6 Address	MAC Address
FastEthernet0/0	Up	192.168.1.1/24	<not set>	0007.EC95.AB10
FastEthernet1/0	Up	192.168.3.1/24	<not set>	00D0.BAC7.62B6
Serial2/0	Up	<not set>	<not set>	<not set>
Serial3/0	Down	<not set>	<not set>	<not set>
FastEthernet4/0	Down	<not set>	<not set>	0060.4782.2C6B
FastEthernet5/0	Down	<not set>	<not set>	00E0.A385.6B1E

Physical Location: Intercity, Home City, Corporate Office, Main Wiring Closet

Hostname: Alfa

Time: 02:12:35 Power Cycle Devices Fast Forward Time

Scenario 0

Fire Last Status Source Destination Type Color Time (sec) Periodic Num

Toggle PDU List Window

Levantamiento de FastEthernet en Beta

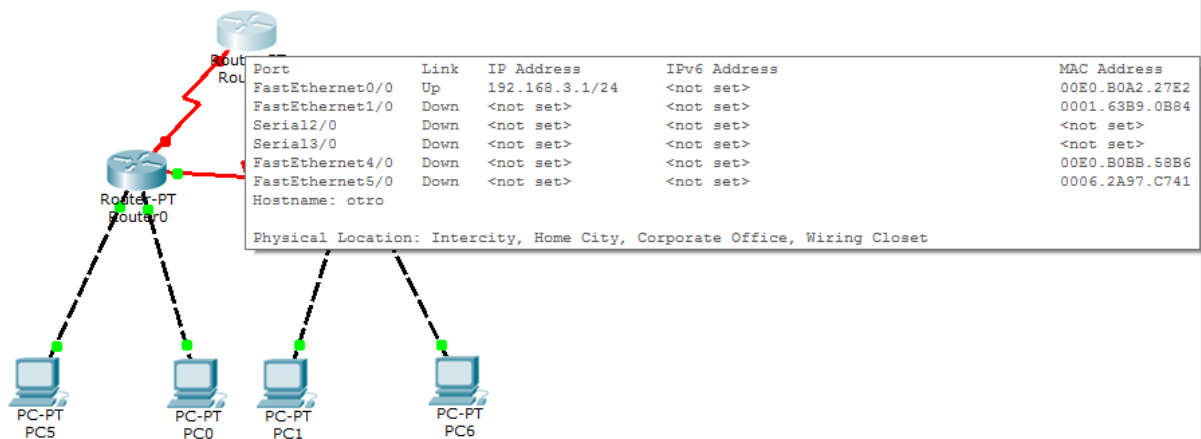
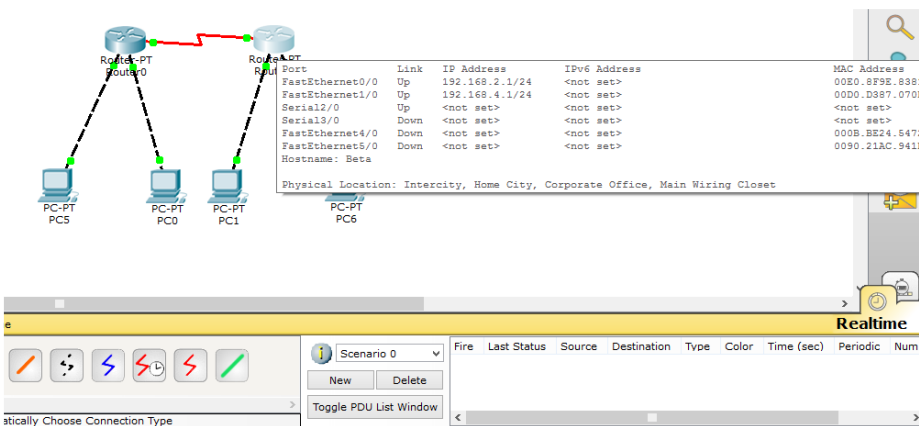
```
Beta>enable
Password:
Beta#config t
Enter configuration commands, one per line. End with CNTL/Z.
Beta(config)#interface fa1/0
Beta(config-if)#ip address 192.168.4.1 255.255.255.0
Beta(config-if)#no shutdown

Beta(config-if)#
%LINK-5-CHANGED: Interface FastEthernet1/0, changed state to up

%LINEPROTO-5-UPDOWN: Line protocol on Interface FastEthernet1/0, changed state to up
```

Copy

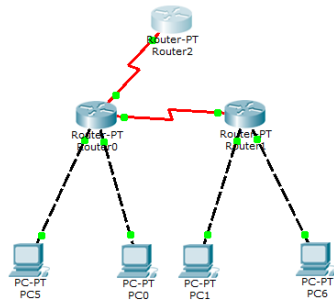
Paste



```
otro>enable
Password:
otro#config t
Enter configuration commands, one per line. End with CNTL/Z.
otro(config)#interface fa0/0
otro(config-if)#ip address 192.168.3.1 255.255.255.0
otro(config-if)#no shutdown

otro(config-if)#
%LINK-5-CHANGED: Interface FastEthernet0/0, changed state to up
```

Copy Paste



Cycle Devices Fast Forward Time

Realtime

Scenario 0

Fire	Last Status	Source	Destination	Type	Color	Time (sec)	Periodic	Num
------	-------------	--------	-------------	------	-------	------------	----------	-----

Toggle PDU List Window

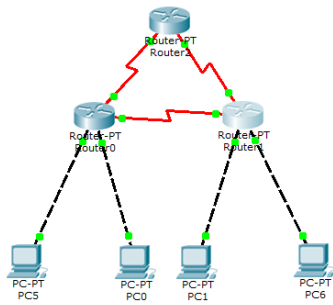
Levantamiento de serial en Beta

```
otro>enable
Password:
otro#config t
Enter configuration commands, one per line. End with CNTL/Z.
otro(config)#ip route 192.168.3.0 255.255.255.0 serial2/0
otro(config)#interface serial2/0
otro(config-if)#shutdown
otro(config-if)#ip route 192.168.1.0 255.255.255.0 serial2/0
otro(config)#interface serial2/0
otro(config-if)#shutdown
otro(config-if)#no shutdown

otro(config-if)#
%LINK-5-CHANGED: Interface Serial2/0, changed state to up

%LINEPROTO-5-UPDOWN: Line protocol on Interface Serial2/0, changed state to up
```

Copy Paste



ces Fast Forward Time Realtime

Scenario 0

Fire	Last Status	Source	Destination	Type	Color	Time (sec)	Periodic	Num
------	-------------	--------	-------------	------	-------	------------	----------	-----

New Delete

Toggle PDU List Window

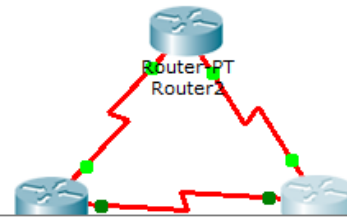
Automatically Choose Connection Type

```
Beta>enable
Password:
Beta#config t
Enter configuration commands, one per line. End with CNTL/Z.
Beta(config)#ip route 192.168.3.0 255.255.255.0 serial3/0
Beta(config)#interface serial3/0
Beta(config-if)#no shutdown

Beta(config-if)#
%LINK-5-CHANGED: Interface Serial3/0, changed state to up

%LINEPROTO-5-UPDOWN: Line protocol on Interface Serial3/0, changed state to up
```

Copy Paste



Port	Link	IP Address	IPv6 Address	MAC Address
FastEthernet0/0	Up	192.168.2.1/24	<not set>	00E0.8F9E.8381
FastEthernet1/0	Up	192.168.4.1/24	<not set>	00D0.D387.070D
Serial2/0	Up	<not set>	<not set>	<not set>
Serial3/0	Up	<not set>	<not set>	<not set>
FastEthernet4/0	Down	<not set>	<not set>	000B.BE24.5472
FastEthernet5/0	Down	<not set>	<not set>	0090.21AC.941D

Hostname: Beta

Physical Location: Intercity, Home City, Corporate Office, Main Wiring Closet

